

CASE STUDY

CSBF2026
Rev 05

Commercial HVAC Training Facility Fiskdale, Massachusetts

Scope of the Job:

The installation included multiple boilers and furnaces (oil and propane) all vented together for training purposes, allowing technicians to learn burner adjustments and system conversions.

Product Used:

2" InnoFlue® for exhaust, **InnoFlue® Lite** for intake, along with **OctoClamps and Hanger** systems for support.

Installer Info:

Cullen Mechanical, Inc
Phone: 781.321.2011
Email: kcullenmechanical@gmail.com



Buddy Felt
Social: @buddytheplumber



Centrotherm

Contact Us:

http://centrotherm.us.com
info@centrotherm.us.com
518.434.3400



Centrotherm

InnoFlue Lite



UL 1738
ULC S636

TESTIMONIAL

CSBF2026
Rev 01

Buddy Felt at a Commercial HVAC Training Facility Fiskdale, Massachusetts

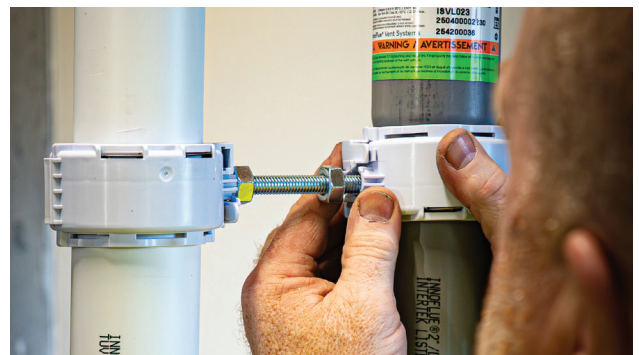
**“I use Centrotherm
all the time.
I love your product!”**

– Buddy Felt, “Buddy the Plumber”

At the core of the project were InnoFlue® and InnoFlue® Lite pipes, which delivered significant performance advantages over traditional materials. Buddy emphasized ease of use and handling, noting, *“The two-inch pipe went together really well,”* and *“It’s lightweight, easy to use... much lighter than CPVC... easier to cut, easy to clean up.”* The push-fit system also eliminated the need for primers and adhesives, contributing to a cleaner install: *“With PVC, you’d have purple primer everywhere... I wouldn’t want that on a finished epoxy floor.”* These benefits translated directly into faster installation times, with Buddy stating, *“I could vent this furnace in less than two hours, no problem.”* He also highlighted the value of the Lite system for specific applications, noting its cost advantage and flexibility: *“I do know that the InnoFlue® Lite costs less... we can use it as an intake,”* pointing to its practicality as a complementary solution within the overall system.

Centrotherm’s OctoClamp and Hanger system further enhanced installation efficiency and flexibility. Buddy highlighted the adaptability of the system, explaining, *“I do like the ability to mount it on the top as well as the side,”* which allowed for proper support even in challenging structural conditions. This flexibility proved valuable when working around joists and alignment constraints: *“If it doesn’t line up with a joist exactly... it’s still supported. That was nice.”* Once familiar with the system, performance improved even further, with him noting, *“The Octo Clamp... once I figured it out, it worked really well,”* and ultimately concluding, *“The Octo Hangers saved us time, definitely.”*

The project demonstrates the clear advantages of combining innovative materials with contractor-focused design. The InnoFlue® system not only improved installation speed and cleanliness but also offered long-term usability benefits, as highlighted by the ability to rework connections: *“If you lube it up again, you can actually take it apart—whereas PVC is one and done.”* Overall, the system delivered a streamlined, high-quality result, reinforcing its value in both training and real-world applications. As Buddy summarized, *“It’s easy to work with. It’s light. The supports and hangers are great.”*



Centrotherm

Contact Us:

<http://centrotherm.us.com>
info@centrotherm.us.com
518.434.3400



Centrotherm

InnoFlue Lite



UL 1738
ULC S636